

Content and Composition of the Global Land Surface Water Dataset at 30 m Resolution (2010)

Chen, J.¹ Liao, A. P.¹ Chen, L. J.^{1*} Zhang, H. W.¹ He, C. Y.¹ Peng, S.¹
Wu, H.¹ Zhang, W. W.¹ Li, R.¹ Zheng, X. Y.¹ Mei, Y.¹ Lu, M.¹ Lu, N.¹
Kang, R.¹ Xing, H. Q.¹ Liu, L. F.^{1,2} Han, G.^{1,2} Wang, J.² Yang, A. L.³
Sun, L. M.³ Song H.³ Chen, W. P.⁴ Zhou, X. M.⁴ Xia, L.⁴ Jiang, H. B.⁵
Huo, J.⁵ Zhang, Y.⁵ Liu, W. D.⁵ Li, Y. X.⁵ Zhai, L.⁶ Sang, H. Y.⁶

1. National Geomatics Center of China, Beijing 100830, China;
2. Geo-Compass Geoinformation Technology Company, Beijing 100048, China;
3. Heilongjiang Geomatics Center of NASG, Harbin 150086, China;
4. The First Institute of Photogrammetry and Remote Sensing, National Administration of Surveying, Mapping and Geoinformation of China (NASG), Xi'an 710054, China;
5. Sichuan Surveying and Mapping Institute of Remote Sensing Information, Chengdu 610100, China;
6. Chinese Academy of Surveying and Mapping, Beijing 100830, China

Abstract: The Global Land Surface Water Dataset at 30 m Resolution (2010) (GlobeLand30-WTR2010) was developed based on 9,907 Landsat TM5 and ETM+ image and 2,640 Chinese Environment Disaster Mitigation Satellite (HJ-1) images around 2010. The global dataset was divided into 759 frames, each comprising a data file that encompasses four files: (1) an entity data file (in GeoTIFF raster format), (2) a coordinate information file (in TIFF WORD format), (3) a classified elementary image map file (a shape file format vector layer file that records scope per scene and the acquisition time of the main images used in the classification, and (4) a metadata file (XML format). The dataset also includes an additional attached file which lists data file names, geographic coordinates, zoning codes, and other information included within the 759 data file sets. The data development methodology and standards were described at the paper.

Keywords: global land cover; land surface water; 30 m resolution; classification method; remote sensing mapping

1 Introduction

Areas of surface water include rivers, lakes, and reservoirs, as well as seasonal cover. Although land area covered by freshwater encompasses just 0.3% of this resource globally, comprising just 0.01% of the total water in the world, freshwater is nevertheless the major source for production and life in many regions, as well as one of the most important resources for human survival and development. In addition, areas of land surface water make

Received: 20-09-2014; **Accepted:** 15-11-2014; **Published:** 25-03-2017

Foundation(s): Ministry of Science and Technology of P. R. China (2013AA122802, 2009AA1200, 2009AA122003); National Natural Science Foundation of China (41231172)

***Corresponding Author:** Chen, L. J. L-4546-2016, National Geomatics Center of China, chenlj@nsdi.gov.cn

Article Citation: Chen, J., Liao, A. P., Chen, L. J., *et al.* Content and composition of the global land surface water dataset at 30 m resolution (2010) [J]. *Journal of Global Change Data & Discovery*, 2017, 1(1): 27–39. DOI: 10.3974/geodp.2017.01.05.

Dataset Citation: Chen, J., Liao, A. P., Chen, L. J., *et al.* Global land surface water dataset at 30 m resolution (2010) [DB/OL]. Global Change Research Data Publishing & Repository, 2014. DOI: 10.3974/geodp.2014.02.01.V1.

up a major component of the global water cycle. The spatial distribution of these resources reflects the location of reservoirs and water utilization on the land surface globally^[1–2], while observed variations are indicative of the continuous impacts of moisture movement, migration of chemical substances, and changes in ecological systems that result from climate fluctuations, land surface processes, and human activities^[3–4]. As a result, it remains fundamental to comprehensively understand the spatial distribution of land surface water resources and to continuously monitor dynamic changes in order to diagnose the health of the global ecological system.

Thus, supported by the ‘Global Land Cover Remote Sensing Mapping and Key Technical Research’ project as part of the National High Technology Research and Development Program, China was at the forefront of high-resolution global land cover remote sensing (RS) mapping by 2009^[5–6]. Utilizing RS data at 30 m resolution, complemented by data at 250 m resolution, the aim of this project was to develop a global land cover data product by 2010 (GlobeLand30-2010)^[7]. The dataset presented in this paper is the land surface water area data (GlobeLand-Water2010) that was generated by this project^[7–8].

2 Metadata of Dataset

The summaries of the GlobeLand30-WTR2010 metadata are presented in Table 1 and Table 2, which include the information about the dataset title, abbreviated name, author, geographic area, data year, data spatial resolution, data publisher, and data policy.

Table 1 List of GlobeLand30-WTR2010 dataset authors

Serial No.	Name	ResearcherID	Organization	Contact information
1	Chen Jun	C-7025-2017	National Geomatics Center of China	chenjun@nsdi.gov.cn
2	Liao Anping	C-7538-2017	National Geomatics Center of China	lap@nsdi.gov.cn
3	Chen Lijun	L-4546-2016	National Geomatics Center of China	chenlj@nsdi.gov.cn
4	Zhang Hongwei	C-9720-2017	National Geomatics Center of China	zhhw@nsdi.gov.cn
5	He Chaoying	C-9259-2017	National Geomatics Center of China	hechying@nsdi.gov.cn
6	Peng Shu	C-7357-2017	National Geomatics Center of China	pengshu@nsdi.gov.cn
7	Wu Hao	C-6761-2017	National Geomatics Center of China	wuhao@nsdi.gov.cn
8	Zhang Weiwei	C-8073-2017	National Geomatics Center of China	zww9820@126.com
9	Li Ran	C-6806-2017	National Geomatics Center of China	liran@nsdi.gov.cn
10	Zheng Xinyan	C-6703-2017	National Geomatics Center of China	xinyan_zheng@nsdi.gov.cn
11	Mei Yang	C-9249-2017	National Geomatics Center of China	meiyang81@163.com
12	Lu Miao	C-7372-2017	National Geomatics Center of China	lumiao0616@163.com
13	Lu Nan	C-6796-2017	National Geomatics Center of China	ln901105@163.com
14	Kang Rui	C-9208-2017	National Geomatics Center of China	295672415@qq.com
15	Xing Huaqiao	C-6845-2017	National Geomatics Center of China	xinghuaqiao@126.com
16	Liu Lifan	C-7320-2017	Geo-Compass Geoinformation Technology Company	liulf@nsdi.gov.cn
17	Han Gang	C-6835-2017	Geo-Compass Geoinformation Technology Company	hgbj0001@gmail.com
18	Wang Jing	C-7381-2017	Geo-Compass Geoinformation Technology Company	wangjingqzy@sina.com
19	Chen Weiping	C-9743-2017	The First Institute of Photogrammetry and Remote Sensing, National Administration of Surveying, Mapping and Geoinformation of China (NASG)	cwpsc@163.com

(To be continued on the next page)

(Continued)

Serial No.	Name	ResearcherID	Organization	Contact information
20	Zhou Xiaomin	C-9441-2017	The First Institute of Photogrammetry and Remote Sensing, National Administration of Surveying, Mapping and Geoinformation of China (NASG)	410426390@qq.com
21	Xia Lu	C-9417-2017	The First Institute of Photogrammetry and Remote Sensing, National Administration of Surveying, Mapping and Geoinformation of China (NASG)	46103337@qq.com
22	Yang Ailing	C-6817-2017	Heilongjiang Geoinformatics Center of NASG	172323001@qq.com
23	Sun Limei	C-7480-2017	Heilongjiang Geoinformatics Center of NASG	sunlm@hljbsm.gov.cn
24	Song Hao	C-7459-2017	Heilongjiang Geoinformatics Center of NASG	8465509@qq.com
25	Jiang Hongbing	C-9332-2017	Sichuan Surveying and Mapping Institute of Remote Sensing Information	scrsygy@sina.com
26	Huo Jian	C-7291-2017	Sichuan Surveying and Mapping Institute of Remote Sensing Information	scrsygy@sina.com
27	Zhang Yan	C-9230-2017	Sichuan Surveying and Mapping Institute of Remote Sensing Information	zhangyanyan917@163.com
28	Liu Wudi	C-8352-2017	Sichuan Surveying and Mapping Institute of Remote Sensing Information	308876585@qq.com
29	Li Yuxian	C-8324-2017	Sichuan Surveying and Mapping Institute of Remote Sensing Information	20933167@qq.com
30	Zhai Liang	C-7364-2017	Chinese Academy of Surveying and Mapping	zhailiang@casm.ac.cn
31	Sang Huiyong	C-8187-2017	Chinese Academy of Surveying and Mapping	sanghy@casm.ac.cn

Table 2 GlobeLand30-WTR2010 dataset metadata summary

Items	Description
Dataset full name	Global land surface water dataset at 30 m resolution
Dataset short name	GlobeLand30-WTR2010
Geographical region	Land of global (Antarctica not included)
Year	2010
Spatial resolution	30 m
Temporal resolution	1 year
Data formats	.rar, .tif, .tfw, .shp, .xml, .exl
Data size	8 GB
Data files	853 zipped data files, each of which contains four subfiles, in .tif, .tfw, .shp and .xml formats. An additional data file is also included that contains the name of the data file, corresponding geographic coordinates, and tile code (in .exl format)
Foundation (s)	Ministry of Science and Technology of P. R. China (2013AA122802, 2009AA1200, 2009AA122003); National Natural Science Foundation of China (41231172)
Data publisher	Global Change Research Data Publishing & Repository, http://www.geodoi.ac.cn
Address	No. 11A, Datun Road, Chaoyang District, Beijing 100101, China
Data sharing policy	Data from the Global Change Research Data Publishing & Repository includes metadata, datasets (data products), and publications (in this case, in the <i>Journal of Global Change Data & Discovery</i>). Data sharing policy includes: (1) Data are openly available and can be free downloaded via the Internet; (2) End users are encouraged to use Data subject to citation; (3) Users, who are by definition also value-added service providers, are welcome to redistribute Data subject to written permission from the GCdataPR Editorial Office and the issuance of a Data redistribution license; and (4) If Data are used to compile new datasets, the 'ten per cent principal' should be followed such that Data records utilized should not surpass 10% of the new dataset contents, while sources should be clearly noted in suitable places in the new dataset ^[9]

3 Methods

3.1 Definition of Terms

In this paper, the term ‘land surface water’ is used to refer to all surface water including rivers, lakes, reservoirs, and ponds, with the exception of farmlands (paddy fields), wetlands, multi-year snow cover, and glaciers.

Due to the existing mapping requirements for water areas, including 1 : 100,000 and 1 : 250,000 topographic schemes^[10–11], we calculated a number of indexes to extract global land surface water areas (Table 3) via analysis of the expressive ability of images at 30 m resolution. Thus, because of the presence of mixed pixels in 30 m resolution RS images, planar water areas were mostly mapped using indexes from 1 : 100,000 topographic maps, with the minimum spot pattern for manual verification defined as 3 × 3 pixels (equivalent to 90 × 90 m² in actuality). Similarly, in the case of linear water areas, the minimum width of manual verification is three pixels (equivalent to 90 m in actuality). Care was taken to ensure that central pixels were non-mixed to enhance the extraction accuracy of water areas.

Table 3 Comparisons between GlobeLand30-WTR2010 extraction indexes and topographic map requirements

	Requirements of 1 : 100,000 topographic maps		Requirements of 1 : 250,000 topographic maps		Water area extraction indexes used in this project	
	Mapping requirements	Actual size	Mapping requirements	Actual size	Index	Actual size
Linear water area	0.4 mm	40 m	0.4 mm	100 m	3 pixels	90 m
Planar water area	1 mm ²	100 × 100 m ²	1 mm ²	250 × 250 m ²	3 × 3 pixels	90 × 90 m ²

In addition, for the quality control, we keep the water areas smaller than the minimum spot pattern, if it is possible. In light of regional differences in areas of land surface waters when viewed from a global perspective, we also formulated a number of quality control indexes for the extraction of areas of water.

3.2 Selection of Remote Sensing Images

The images that were classified for the development of the GlobeLand30-WTR2010 dataset are predominantly multi-spectral and have a 30 m resolution. These include 9,907 scenes from the United States land resource satellite (Landsat) TM5 and ETM+ [<http://earthexplorer.usgs.gov/>] (Figure 1), and 2,640 image scenes captured by the Chinese environmental satellite (HJ-1) [<http://www.cresda.com/>] (Figure 2). Images containing no (or few) clouds were preferentially selected, along with multi-spectral images of vegetation during the growing seasons. Images were also selected where possible to encompass a time period of one year either before, or after, 2010 (Table 4). However, in regions where it proved difficult to obtain images, this time phase was extended appropriately to ensure complete cloudless global image coverage.

Table 4 Landsat image acquisition times

Year	2009	2010	2011	Other
Proportion	30.59%	41.06%	9.14%	19.21%

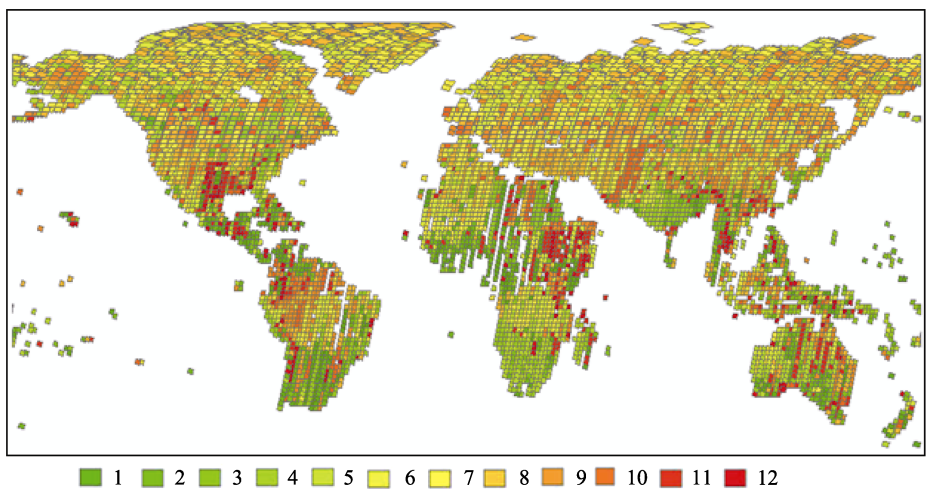


Figure 1 World map showing month-by-month (numbered 1 to 12) acquisition of Landsat TM and ETM+ images

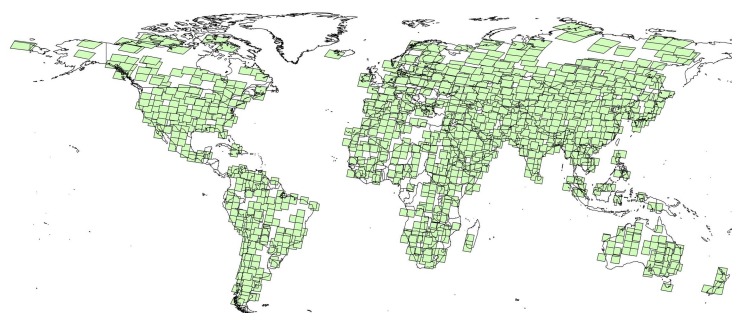


Figure 2 World map showing the data coverage area of the Chinese HJ-1 satellite

3.3 Data Preprocessing

Preprocessing was carried out to enable the application of data encompassing different time phases from the two distinct satellite series. This step is of considerable importance as the quality of the results from preprocessing results will directly affect the land surface water data products. Thus, our data preprocessing encompassed geometric correction and radiation calibration of satellite RS image data. The algorithms and processes used here follow those outlined in previous studies^[12–17] for the management of 30 m resolution RS satellite data.

3.4 Remote Sensing Mapping and Data Product Development

Mapping land surface waters using satellite RS images and the development of a data product (Figure 3) comprised automatic computer classification, human correction via computer interaction^[8,18], and data integration^[8,18].

3.4.1 Automatic Computer Classification

The computer-based classification process used in this study employed three algorithms to consider spectrum, scale, phase, and other differences between global water bodies to automatically extract land surface water area. This was done using a decision tree extraction

method for water bodies based on prior knowledge^[8,18–19], a maximum likelihood mask method based on the relationship between spectrums and the Tasseled Cap Wetness index (TCW)^[20], and a supervised classification method that is based on Support Vector Machine and Maximum Likelihood Classifier (SVM/MLC).

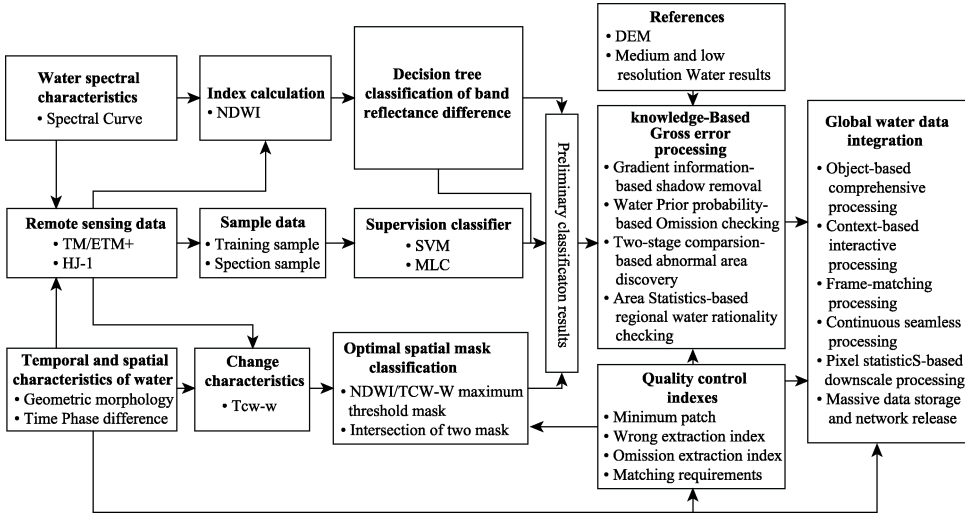


Figure 3 Diagram of the RS extraction method employed for global land surface water areas

3.4.2 Corrections via People-computer Interaction

In order to minimum the noises from the remote sensing images for the water identifying, we carried out correction using output of multi-scale segmentation as the basic editing unit, and performed comprehensive processing of finely-divided spot patterns on large-area water bodies. These finely-divided spot patterns were then filtered based on segmentation objects extracted from the results of auto-classification in accordance with the minimum established water body spot patterns. This people-computer editing process therefore minimized problems such as the presence of seasonal water bodies, confusion between types, distinctions between inland water and seas, and edge snap failures between scene-separated images.

3.4.3 Data Integration

We integrated data according to standards to enable the process of tiles composite. This process also enabled the generation of standardized geographic data products.

4 Dataset Composition

4.1 Dataset Spatial Distribution

The GlobeLand30-WTR2010 dataset presented in this paper covers all global land areas with the exception of Antarctica (Figure 4).

4.2 Data Framing

We framed data subsets according to latitude using the two approaches shown in Figure 5.

4.2.1 Data Framed by 5° Latitude × 6° Longitude

We framed data by 5° latitude × 6° longitude within the area encompassed by 60° of

south-north latitude (Figure 6). This process led to the generation of 648 framed datasets.

4.2.2 Data Framed by 5° Latitude × 12° Longitude

We framed data by 5° latitude × 12° longitude within the area encapsulated by between 60° and 80° south-north latitude. Within this area, data were framed and projected with respect to the central meridian of the odd number 6° zone (Figure 7), giving rise to 111 framed data-sets.

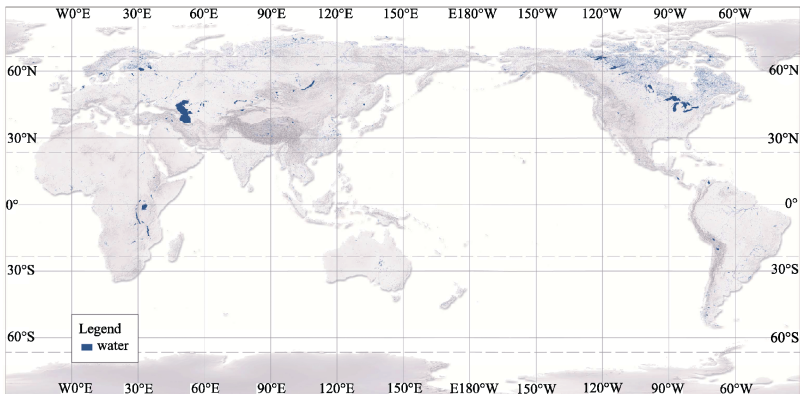


Figure 4 Map showing the spatial distribution of global areas of land surface water in 2010

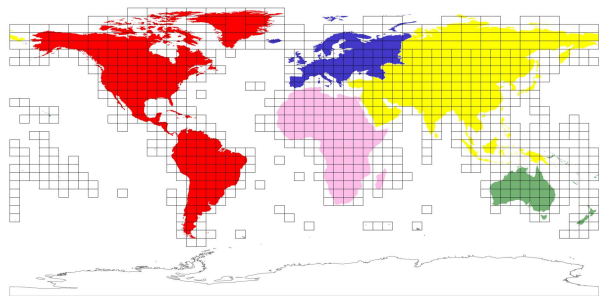


Figure 5 Map showing framing of the GlobeLand30-WTR2010 dataset

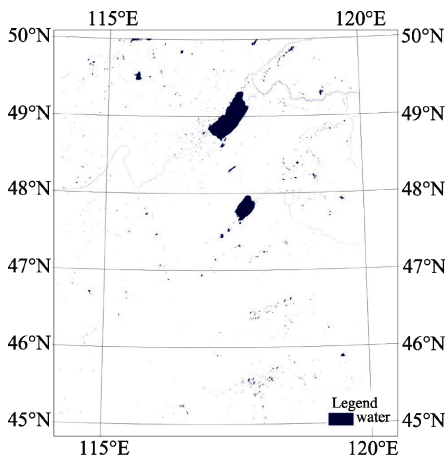


Figure 6 Map of water data from tile N50_45

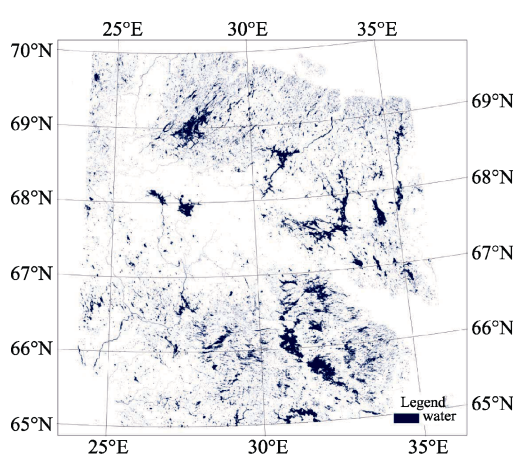


Figure 7 Map of water data map from tile N35_65

In total, the GlobeLand30-Water2010 dataset contains 759 frames (excluding Antarctica).

In each case, the trimming scope is the rectangular area formed by the minimum enclosing rectangle of the four corners of the frame expanding outward by 7,500 m (250 pixels). Area coverage is shown in figure 5, while all data documents and their corresponding geographic coordinates are presented in data document *GlobeLand30_WTR2010.xlsx*.

4.2.3 Data Document Name

The name of each framing data document is composed of 22 characters that are ordered in sequence comprising the abbreviation of south-north latitude (one bit), the 6° zone code (two bits), ‘_’, the initial latitude of the lower left hand corner (two bits), ‘_’, the product year (four bits), LC030 (the abbreviation for the 30 m resolution land cover), and ‘_water’. Thus, for example, the data document name ‘N19_25_2010LC030_water’ refers to the 19th zone and includes 30 m resolution water area data for 2010 within the rectangular area encompassed by east longitudes between 108° and 114° and north latitudes between 25° and 30°. In terms of frames that span two 6° zones, the central meridian is filled with that of odd number 6° zone, while the code is the number of the odd number zone. Similarly, the initial latitude field is filled with the latitude value of the lower edge line of the frame in the northern hemisphere and the latitude value of the upper edge frame line in the southern hemisphere (*GlobeLand30_WTR2010.xlsx*).

4.3 Data Composition

4.3.1 Data Files

All *GlobeLand30-2010* framing data are filed and can be downloaded and shared in the form of .rar file compressed packages, for example, *N19_25_2010LC030_WTR.rar*. Thus, the compressed data size of a single-frame data document is *N19_25_2010LC030_WTR.doc*. The total dataset size is 8 GB. Each compressed package contains four documents, including the classification results, coordinate information, a basic image map based on classified data, and metadata. Specifically, these comprise:

- (1) The classification results document which records information on land coverage in the form of GeoTIFF raster data, encompassing 8-Bit 256 indexed color modes, and with an attribute value of 60;
- (2) The coordinate information document which records classification results in TIFF WORD format;
- (3) The basic image map based on a classified data document which records the scope of each major image frame as well as the vector acquisition time layers in shape file format;
- (4) The Metadata document which records results of metadata classification, stored in XML format.

4.3.2 Appendix Files

All data files, corresponding coordinate collection data, and data bands are stored in files suffixed with ‘*GlobeLand30_WTR2010.xlsx*’ (Table 5).

5 Data Reliability

In order to verify the precision of the land surface water areas calculated during this project, we used a two-stage sampling model test for our spatial data. In the first stage, the test model was “frame sampling”, as each sampled unit was a frame, while in the second stage, the

the test model was ‘element sampling’, as each sampled unit was an element. Thus, 80 frames were sampled globally in order to evaluate precision (Figure 8, Figure 9), 6,438 sample points were selected at random. The results of this analysis show that the precision of sample mapping was 82.77%, while user precision was 92.09%.

Table 5 Examples of the composition, corresponding coordinates, and band numbers of data files

Serial no.	Map file name	Data file collection	Data files	UTM band number	Latitude range	Longitude range
1	N26_10	N26_10_2010LC030_WTR.rar	N26_10_2010LC030_WTR.tif,N26_10_2010LC030_WTR.tfw,N26_10_2010LC030_WTR.shp,N26_10_2010LC030_WTR.xml	26	N10° to N15°	W30° to W24°
2	N26_15	N26_15_2010LC030_WTR.rar	N26_15_2010LC030_WTR.tif, N26_15_2010LC030_WTR.tfw, N26_15_2010LC030_WTR.shp, N26_15_2010LC030_WTR.xml	26	N15° to N20°	W30° to W24°
...
759	S59_75	S59_75_2010LC030_WTR.rar	S59_75_2010LC030_WTR.tif, S59_75_2010LC030_WTR.tfw, S59_75_2010LC030_WTR.shp, S59_75_2010LC030_WTR.xml	59	S75° to S80°	E168° to E180°

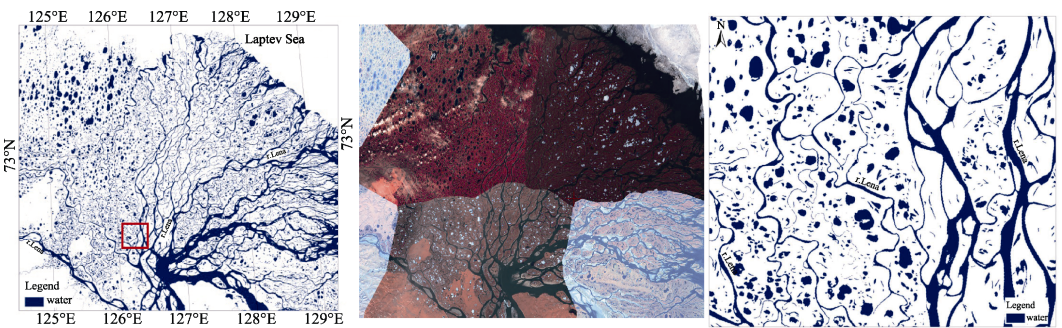


Figure 8 RS images and water area extraction results for the Lena River Estuary

6 Distribution Statistics for Global Land Surface Water Area

The total area of global land surface water in 2010 was $367.54 \times 10^4 \text{ km}^2$, encompassing 2.73% of total land surface area^[21]. At the same time, however, results also show that the spatial distribution of global land surface water is extremely uneven (Figure 10); observed along latitude, surface waters are mainly distributed in mid and high northern hemisphere latitudes and in equatorial regions of the southern hemisphere. Indeed, regions that globally encapsulate a higher percentage of surface water are mainly concentrated in the mid and high latitudes of the northern Hemisphere and in the tropics and high latitudes of the southern hemisphere. Observed along longitude, the areas of land surface water in the eastern and western hemispheres are approximately the same size and as evenly distributed as in the eastern hemisphere. In contrast, in the western hemisphere, surface waters are mainly concentrated in the zone between 60° WL and 140° WL. Breaking this down further on the basis of continents, results for land surface water area as a percentage of global surface water are as follows: North America, $152.89 \times 10^4 \text{ km}^2$ (41.60%); Asia, $124.28 \times 10^4 \text{ km}^2$ (33.81%); Eu-

Europe, $31.59 \times 10^4 \text{ km}^2$ (8.59%); Africa $27.19 \times 10^4 \text{ km}^2$ (7.40%); South America, $26.78 \times 10^4 \text{ km}^2$ (7.29%), and; Oceania, $4.82 \times 10^4 \text{ km}^2$ (1.31%).



Figure 9 RS images and surface water extraction results for lakes on the Qinghai-Tibetan Plateau

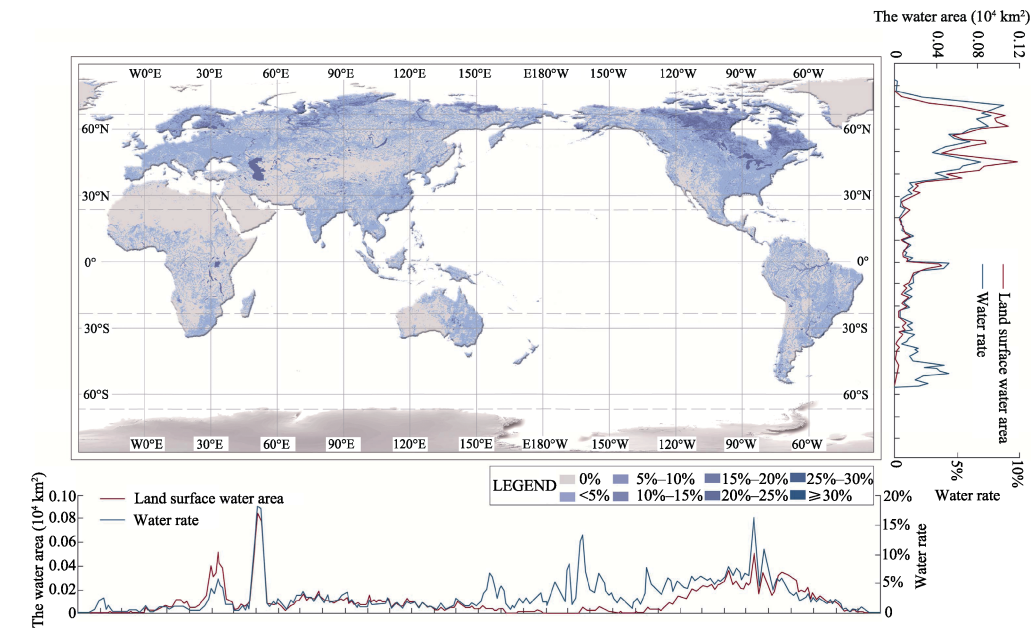


Figure 10 Map of the spatial distribution of global land surface water

7 Discussion

7.1 The Time Phase Problem in the Global Land Surface Water Dataset (2010)

There is a fundamental problems effect the data quality, because of the remote sensing images from different months or years.

7.2 The Impact of Vertical Mountain Land Zonality on the Identification and Defini-tion of Water Bodies

Under normal circumstances, our project team selected data from plant growth seasons as much as possible when filtering satellite RS images. In alpine regions, for example, the plant growth season refers specifically to the basal zone; thus, due to the vertical distribu-

tion of natural zones in mountainous areas, this zone in some regions of high elevation will still be within the growth season while it will be frozen at medium or higher elevations. This elevation difference has a large impact on the identification and definition of water bodies, as the shadow of mountain. To mitigate these issues, our project team employed MODIS data every eight days to make corrections via human-computer inspection and interaction.

8 Conclusion

The results of this project demonstrate that mapping using RS to continuously monitor the area of global land surface water is a meticulous but meaningful task. The dataset presented in this paper is the first installment of a global time sequence of 30 m resolution land surface water data products.

Acknowledgements

The Global Land Surface Water Dataset at 30 m Resolution (2010) is part of the outcomes based on the GlobeLand30 project, which was approved by the Ministry of Science and Technology of the P. R. China (MOST) in 2009, and received the full support of Xu, Guanhua, Xu, Deming and Ku, Rexi, leaders from MOST and the Chinese National Information Bureau of Geographic Surveying and Mapping.

Professor Townshed, John from University of Maryland, USA, provided 9,907 LANDSAT image scenes. The National Disaster Reduction Center of China provided 2,640 satellite data scenes, while the European Environment Agency (EEA), National Research Council of Canada (NRC), Geoscience Australia, and a number of other international institutions also provided reference data.

Director Liao, Xiaohan, Chief Engineer Li, Jiahong, Division Chief Zhang, Songmei and colleagues at the Chinese National Remote Sensing Center repeatedly organized expert meetings to discuss the research and development of this dataset. Liu, Jiyuan, Professor of Institute of Geographic Sciences and Natural Resources Research, Chinese Academy of Sciences, provided part of the land use reference data, while during the project execution period. The project was also supported by Li, Pengde, Deputy Director of the Chinese National Bureau of Geographic Information Surveying and Mapping, as well as of Li, Zhigang; Chen, Xianjun; Zhao, Yong; Jiang, Jie; Hu, Junhong; Song, Yonggang and their colleagues. This project was also supported by the international cooperation initiative of the Chinese National Bureau of Geographic Information Surveying and Mapping and the Chinese National Fundamental Geographic Information Center.

Thanks to the cooperation and promotion provided to this project by Dr. Rayin, Barbara the Executive Director of the Secretariat of the Intergovernmental Group on Earth Observations (GEO), the contents of this dataset were popularized, and applications and collaborations were realized both within the GEO framework and in the wider context of global validation. Indeed, the GEO established a working group to use RS to map global land surface cover (SB-02) in 2012; Professor Herold, Martin from Wageningen University & Research led this group and provided technical support that enabled the completion of this dataset. Similarly, the International Society for Photogrammetry and Remote Sensing (ISPRS) also established a working group to map global land surface cover using RS in August 2012;

Professor Yifang Ban from the Swedish Royal Institute of Technology led this team and also provided technical support that enabled the completion of this dataset. The Committee on Data for Science and Technology (CODATA) Task Group of Preservation of and Open Access to S&T data in/for/with Developing Countries (PASTD) provided a great deal of assistance to enable the promotion, sharing, application, and validation of the GlobeLand30-WTR2010 dataset in developing countries; Professor Liu, Chuang of the Institute of Geographic Sciences and Natural Resources Researcher, Chinese Academy of Sciences (IGSNRR/CAS), Professor Zhou, Xiang of the Institute of Remote Sensing and Digital Earth, CAS led this team and provided case support for the promotion, application, and verification of this dataset. Similarly, Professor Liu, Chuang, Associate Professor Wang, Zhengxing, and Assistant Professor Shi, Ruixiang of the IGSNRR, CAS, Professor Ban, Yifang and Professor Manakos, Ioannis of the Greek Institute of Information and Technology, Greece, Professor Brocelli, Maria A. of the Polytechnic University of Milan, Italy, and Research Fellow See, Linda of IIASA all performed quality inspection and verification on parts of the GlobeLand30-WTR2010 dataset and provided validation reports. Professor Liu, Jiyuan and Zhou, Qiming from Hong Kong Baptist University made valuable suggestions for dataset revisions, while Professor Tang, Ping's team from the Institute of Remote Sensing and Digital Earth, CAS, Professor Chen, Jin's team from Beijing Normal University, Professor Gong, Peng's team from Tsinghua University, and Professor Tong, Xiaohua's team from Tongji University all participated in project discussions.

The GlobeLand30 project team held an ISPRS/GEO joint international seminar on dataset issues in Beijing between April 27th, 2013, and April 28th, 2013. This seminar was jointly organized by Professor Mora, Brice (GOFC-GOLD Land Surface Covering Project Office), Sarantakos, Georgios (GEO Secretariat), Langanke, Tobias (EEA), Uhler, Paul F. (Chairman of the National Science Research Information and Data Committee, USA), and Liu, Chuang. We thank all these attendees for their discussion of relevant data issues concerning science, technology, and results, and for their suggestions for improvements.

In May 2014, Academician Xu, Guanhua and Director Xu, Deming presented preliminary opinions on the development of an open access policy for the GlobeLand30 data. In August 2014, this dataset was offered as open access and a public-welfare shared data policy was approved by the Chinese government. In the same month, the National Remote Sensing Center of the Chinese Ministry of Science and Technology organized a team of experts, led by Academician Guo, Huadong, to initiate the review and acceptance of these data.

In December 2013, Mr. Wu, Hongbo, the Under Secretary-general of the United Nations, visited the Chinese National Bureau of Geographic Information Surveying and Mapping and agreed to offer the GlobeLand30-2010 dataset to the UN. In April 2014, Wu visited the Chinese National Bureau of Geographic Information Surveying and Mapping once more to make preliminary arrangements for the presentation of these data to the UN by China. On September 22nd, 2014, at the Climate Summit held in UN headquarters, New York, Zhang, Gaoli, representative of the State President and Vice Premier of the State Council, presented the GlobeLand30-2010 dataset to the UN Secretary-general, Mr. Ki-moon, Ban, the Secretary general expressed his thanks for this generous donation, noting that it was very timely, and remarking that this 'detailed dataset would help us better understand, monitor, and manage the changes in global land surface and land use.

References

- [1] Foley, J. A., Gregory, R. D., Barford, C., *et al.* Global consequences of land use [J]. *Science*, 2005, 309: 570. DOI: 10.1126/science.1111772.
- [2] Oki, T., Kanae, S. Global hydrological cycles and world water resources [J]. *Science*, 2006, 313: 1068. DOI: 10.1126/science.1128845.
- [3] Vörösmarty, C. J., Green, P., Salisbury, J., *et al.* Global water resources: vulnerability from climate change and population growth [J]. *Science*, 2000, 289: 284–288.
- [4] Prigent, C., Papa, F., Aires, F., *et al.* Changes in land surface water dynamics since the 1990s and relation to population pressure [J]. *Geophysical Research Letters*, 2012, 39: L08403. DOI: 10.1029/2012GL051276.
- [5] Chen, J., Chen J., Gong, P., *et al.* High resolution global land cover mapping [J]. *Geomatics World*, 2011, 9(2): 12–14.
- [6] Chen, J., Chen J., Liao, A. P., *et al.* Concepts and key techniques for 30 m global land cover mapping [J]. *Acta Geodaetica & Cartographica Sinica*, 2014, 43(6): 551–557. DOI: 10.13485/j.cnki.11G2089.2014.0089.
- [7] Chen, J., Liao, A. P., Chen, L. J., *et al.* The content and composition of global dataset of land surface water at 30m resolution (2010) [DB/OL]. Global Change Research Data Publishing and Repository, 2014. DOI: 10.3974/geodb.2014.02.01.V1.
- [8] Liao, A. P., Chen, L. J., Chen, J., *et al.* High-resolution remote sensing mapping of global land water [J]. *Science China: Earth Sciences*, 2014, 57: 1–6.
- [9] The national basic scale map compilation specification: the 1st part: 1 : 25 000 1 : 50 000 1 : 100 000 scale topographic map compilation specification: GB/T 12343.1-2008 [S]. Beijing: Chinese Standards Press, 2008.
- [10] The national basic scale map compilation specification: the 2nd part: 1 : 250 000 scale topographic map compilation specification: GB/T 12343.2-2008 [S]. Beijing: Chinese Standards Press, 2008.
- [11] Chen, C. X., Hu, C. M., Huo, L. Z., Tang, P. Effect of different radiation correction methods of Landsat TM data on land-cover remote sensing classification [J]. *Journal of Remote Sensing*, 2014, 18(2): 320–334.
- [12] Hu, C. M., Zhang, W., Feng, Z., Tang, P. Landsat TM/ETM+ and HJ-1A/B CCD data automatic relative radiation normalization and accuracy verification [J]. *Journal of Remote Sensing*, 2014, 18(2): 267–286.
- [13] Jiang, K., Hu, C. M., Yu, K., *et al.* Landsat TM/ETM+ topographic correction method based on smoothed terrain and semi-empirical model [J]. *Journal of Remote Sensing*, 2014, 18(2): 287–306.
- [14] Li, D. C., Tang, P., Hu, C. M., *et al.* Spatial-temporal fusion algorithm based on an extended semi-physical model and its preliminary application [J]. *Journal of Remote Sensing*, 2014, 18(2): 307–319.
- [15] Shan, X. J., Tang, P., Hu, C. M., *et al.* Automatic geometric precise correction technology and system based on hierarchical image matching for HJ-1A/B CCD images [J]. *Journal of Remote Sensing*, 2014, 18(2): 254–266.
- [16] Tang, P., Zhang, H. W., Zhao, Y. C. *et al.* Practice and thoughts of the automatic processing of multispectral images with 30 m spatial resolution on the global scale [J]. *Journal of Remote Sensing*, 2014, 18(2): 231–253.
- [17] GCdataPR Editorial Office. GCdataPR data sharing policy [OL]. DOI: 10.3974/dp.policy.2014.05 (Updated 2017).
- [18] Chen, L. J., Chen, J., Liao, A. P. Preliminary classification results for global land cover mapping at 30 meters resolution. *Bulletin of Surveying and Mapping*, 2012 (sup): 350–353.
- [19] Chen, J., Chen, J., Liao, A. P., *et al.* Global land cover mapping at 30 m resolution: A POK-based operational approach [J]. *ISPRS J. Photogram Remote Sensing*, 2014, 103:7–27.
- [20] Wu, W. Y., Shen, X. H., Zhou, L. J., *et al.* An integrated method for water body detection and delineation using Landsat ETM+ data [J]. *Bulletin of Science and Technology*, 2008, 24(2): 252–259.
- [21] Cao, X., Chen, J., Chen, L. J., *et al.* Preliminary analysis of spatiotemporal pattern of global land surface water [J]. *Science China: Earth Sciences*, 2014, 44: 1661–1670.