

## Earth Data Encyclopedia

# Yalu River and Basin

Liu, C.<sup>1\*</sup> Shi, R. X.<sup>1</sup> Hao, M. M.<sup>1,2</sup>

1. Institute of Geographic Sciences and Natural Resources Research, Chinese Academy of Sciences, Beijing 100101, China;

2. University of Chinese Academy of Sciences, Beijing 100049, China

**Keywords:** Yalu River; Basin; China; North Korea; data encyclopedia

The Yalu drainage basin locates between the Tumen River Basin, Songhua River Basin in north and the West Korea Bay in south; the Liao River Basin in west and the Taedong-gang River basin in east, its geolocation is from 39°43'57"N to 42°17'28"N, 123°35'59"E to 128°45'50"E. It covers an area of 65,215.49 km<sup>2</sup>, in which, 32,799.22 km<sup>2</sup> is in China and 32,416.27 km<sup>2</sup> in North Korea. The boundary of the Yalu basin in China part is from the southern slope of Changbai Mountain to Changbai Mountain range in southwest, and to the northern part of Qian Mountain Range, and then go to south to the West Korea Bay; in North Korea part, the boundary from the Changbai Mountain to Motianling Mountain in the southeast, then turn to southwest in Mt. Touliu (23.9 m) to Pujon Mt. range, and then turn to west from Yongung-Ri to Mt. Lunglin (2,148 m), Kwangsong, Songwon, again, turn to southwest to Mt. Diyuling, Mt. Jiangnan to West Korea Bay. The Yalu River rises in southern slope of Tianchi Lake of Mt. Changbai and meets the Yellow Sea at the West Korea Bay, it is 844.98 km long. Its tributaries include Hochon, Changjin, Houzhou, Cicheng, Tongro, Zhongman, and Sanqiao Rivers in P. R. Korea; Hun, Pushi, and Ai Rivers in China. It covers areas of Chang Bai Man Aoton County, Linjiang City, Jian City, Huai ren Man County, Kuandian Man County, Dandong City and Donggang City in China and Ryanggang, Chagang and North Pyongan Provinces in North Korea. Because of the temperature monsoon weather (the annual rain fall is 800–1,200 mm) and the steep slope of mountain land, the high gradient reaches 3.2‰, and even 10‰ in some region. More reservoirs were constructed along the river, they are: Shuifeng R. (China and North Korea), Yunfeng R. (China and North Korea), Wiwon R. (China and North Korea), Tiejia R. (China), Huanren R. (China), Huilongshan R.

---

**Received:** 09-11-2017; **Accepted:** 20-11-2017; **Published:** 25-12-2017

**Foundation(s):** Ministry of Science and Technology of P. R. China (2017YFA0604701)

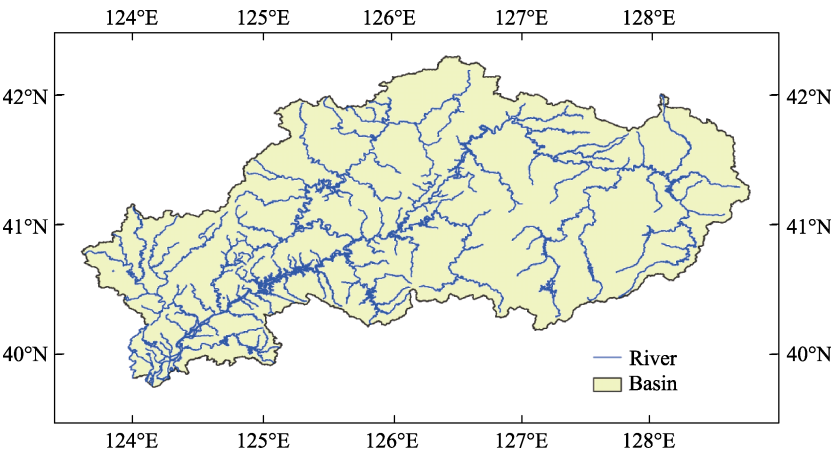
**\*Corresponding Author:** Liu, C. L-3684-2016, Institute of Geographic Sciences and Natural Resources Research, Chinese Academy of Sciences, lchuang@igsnr.ac.cn

**Author ID:** Liu, C. L-3684-2016; Shi, R. X. L-4389-2016; Hao, M. M. T-1568-2017

**Article Citation:** Liu, C., Shi, R. X., Hao, M. M. Yalu River and basin [J]. *Journal of Global Change Data & Discovery*, 2017, 1(4): 481–482. DOI: 10.3974/geodp.2017.04.17.

**Dataset Citation:** Liu, C., Shi, R. X., Hao, M. M. Yalu River and basin [DB/OL]. Global Change Research Data Publishing & Repository, 2017. DOI: 10.3974/geodb.2017.04.19.V1.

(China), Manfeng-Ho (North Korea), Songwon R. (North Korea), Sijung-Ho (North Korea), Rangrim-Ho (North Korea), Changjin-Ho (North Korea), Fuzhan-Ho (North Korea), Phungso-Ho (North Korea) and Hochon River R. (North Korea). The dataset including the Yalu River and its basin in .kmz and .shp data formats, the data size is 43.8 MB (20.1 MB in compressed).



**Figure 1** Map of Yalu River and Basin

**Table 1** Statistics of lakes (reservoirs) in Yalu river basin (2016±1)

Name of Lake (Reservoir)	Country	Area (km <sup>2</sup> )	Name of Lake (Reservoir)	Country	Area (km <sup>2</sup> )
Shuifeng R.	China, North Korea	216.32	Hochon River R.	North Korea	31.61
Yunfeng R.	China, North Korea	65.27	Songwon R.	North Korea	28.01
Wiwon R.	China, North Korea	30.75	Sijung-Ho	North Korea	25.33
Huanren R.	China	87.55	Rangrim-Ho	North Korea	23.42
Huilongshan R.	China	18.20	Fuzhan-Ho	North Korea	12.91
Tiejia R.	China	15.29	Phungso-Ho	North Korea	12.12
Changjin-Ho	North Korea	36.34	Manfeng-Ho	North Korea	10.22

**Table 2** Statistics of Yalu River and its branches

Yalu River		Branches of Yalu River					
Countries	Length (km)	Branch	Country	Length (km)	Branch	Country	Length (km)
China, North Korea	844.98	Hun River	China	416.34	Houzhou River	North Korea	62.43
		Pushi River	China	139.84	Cicheng River	North Korea	105.05
		Ai River	China	206.04	Tongro River	North Korea	238.81
		Hochon River	North Korea	343.73	Zhongman River	North Korea	141.18
		Changjin River	North Korea	245.23	Sanqiao River	North Korea	125.01